

DIEPSLOOT COUNSELLING CONTAINER

Key Insights from March - May



FACE TO FACE COUNSELLING:
629 NEW PATIENTS

New Patients reached per month:

● March: 223 ● April: 178 ● May: 228

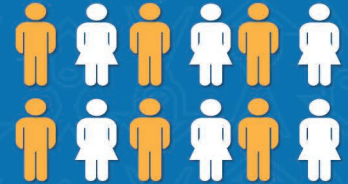
Gender:

● Female

71%

● Male

29%



Top Reasons people seek help from the container:

-  **01 Relationships**
-  **02 Stress**
-  **03 PTSD/Trauma**
-  **04 Substance Abuse**
-  **05 Anxiety/Panic**

SUPPORT GROUPS



- **5** different Support Groups that meet once a month.
- An average of **9** people attended per session.

SCHOOL TALKS

2464 students and teachers reached through school outreach workshops



COMMUNITY WORKSHOPS AND CLINIC TALKS:

21 Clinic Talks assisting **1499** people

12 Talks at, NGO's, Police and Churches assisting **1979** people

